

BIOLOGY

ACTIVITY SHEET

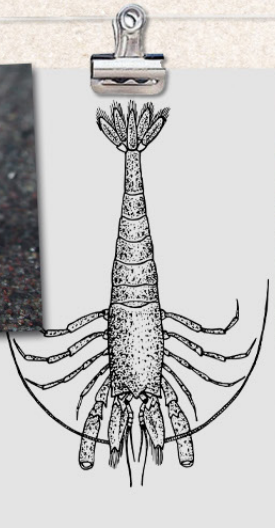
ADAPTATION

ACTIVITY 1

Match the plants and animals to the adaptations



sand eel
Cuckoo Wrasse
lobster



spider crab



cuttlefish

1. Spines enable algae, seaweed and coral to be attached

2. Eight arms and two tentacles furnished with suckers, with which they hold on to their prey. Ability to change colour.

3. Thick protruding lips, strong teeth, both in the jaws (for biting and rasping) and in the throat (for gripping and crushing).

4. Hard exoskeleton. One large claw for crushing and a small claw for cutting.

5. Travel in shoals. Disappears into sand when in danger.

ACTIVITY 2

What are the benefits of these different adaptations?
Describe how these adaptations aid survival in the table below:

ADAPTATION	HOW DOES IT AID SURVIVAL?
Spines	
Suckers	
Ability to change colour	
Strong teeth in jaws	
Strong teeth in throat	
Hard exoskeleton	
Travelling in a shoal	
Disappear into sand	

ACTIVITY 3

Design a creature that would live a long life under the pier - use examples of adaptations, explain why its adaptations help it to survive, include and explain four different adaptations.

ACTIVITY 4

What human and environmental factors could have a detrimental effect on the whole Pier habitat? Describe the factors and explain the impact it could have, consider what adaptations the plants and animals would need to develop to survive.

.....

.....

.....

.....

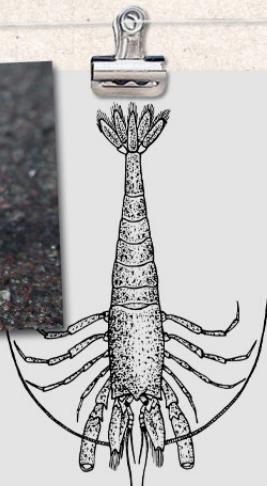
.....

.....

sand
eel



lobster



spider crab



cuttlefish

ACTIVITY 5



Read the display information about the Gribble Worm – describe why is Swanage Pier a good habitat for the Gribble Worm? What human and environmental factors could threaten the success of the Gribble worm.

.....

.....

.....

.....

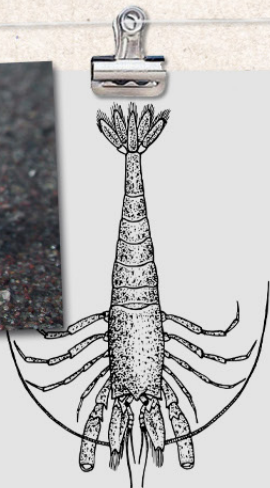
.....

.....

EXTRA ACTIVITY

Biodiversity in an environment is indicated by numbers of different species of plants and animals. Brainstorm some reasons why Biodiversity is important. Create a mind map showing the importance of biodiversity.

sand
eel



lob-ster



spider crab



cuttlefish